

CUTTERBAR

HL 150 - 240



PARTS

UK

3rd edition 2017

 **GREENTEC**

Cutting Edge Technology

IMPORTANT INFORMATION**GreenTec HL 150-240****PARTS****3. Edition – October 2017**

NOTICE: Please ensure that this manual is handed to the operator before using the machine for the first time. If the machine is resold, the Parts list must be given to the new owner!

The information contained in this Parts list is correct at the time of publication. However, in the course of constant development, changes in specification are inevitable. Should you find the information given in this book different to the machine it relates to please contact the “After Sales Department” for advice.



Merkurvej 25
DK 6000 Kolding
Denmark
Tel: +45 75553644
E-mail: info@greentec.eu
Web: www.greentec.eu

CONTENTS

INTRODUCTION	4
USEFUL INFORMATION	5
ORDERING PARTS	6
SPARE PARTS	7
Main frame HL 150-180-210-240	7
Main frame HL 150.....	8
Main frame HL 180.....	9
Main frame HL 210.....	10
Main frame HL 240.....	11
Knife HL 150.....	12
Knife HL 180.....	13
Knife HL 210.....	14
Knife HL 240.....	15
Stickers HL 150-180-210-240.....	16

INTRODUCTION

Dear customer!

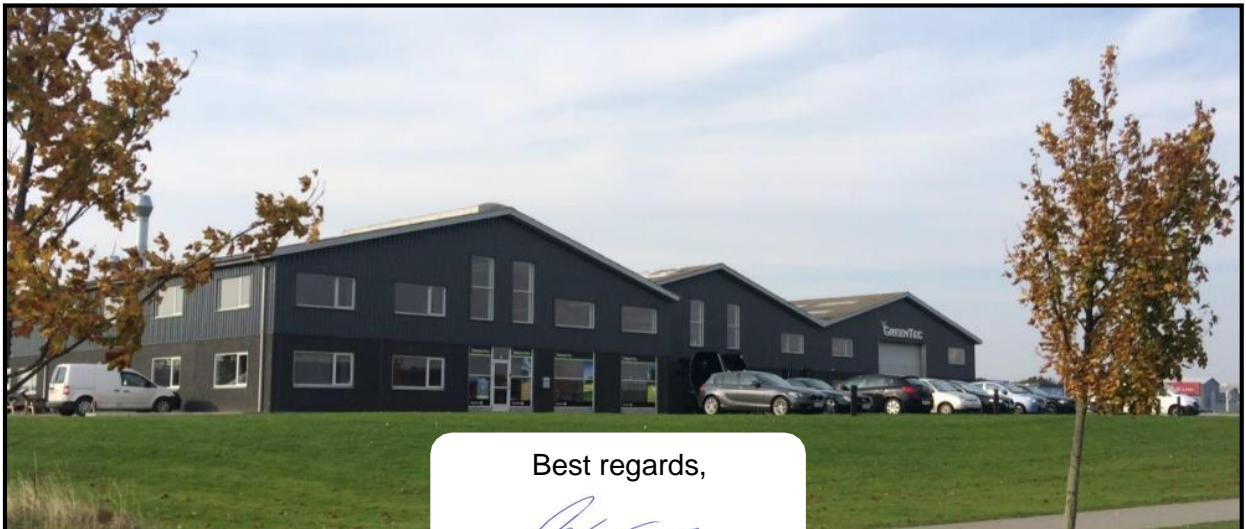
Your new GreenTec machine is constructed with background in more than 20 years' experience with tractor-mounted machines to maintenance of green areas. This machine is produced by the latest technology and recognized safety regulations, standards and regulations.

We want to make a product available in such a way, that neither the use of the machine during transportation or maintenance of the machine causes any damage or misunderstandings.

This parts list contains information that are important and useful for maintaining your GreenTec machine's reliability, dependability and value.

You are welcome to visit our website www.greentec.eu - where the login via the dealer's access gives you the latest updates on instructional and part books on our entire product range.

We hope you will be pleased with your new GreenTec machine.



Best regards,

A handwritten signature in blue ink, appearing to read "John Christensen".

John Christensen
Sales Director GreenTec A/S

GreenTec's vision is to develop and sell quality machines for the maintenance of green areas, including in agriculture, in industry, at airports and in the local sector. Through innovative product development, we will strive to become a leader in our field.

All machines are developed in a simple and functional design in close cooperation with dealers and end users. It is our goal to cover every need in the market segment with preferably two different solutions. In-depth analysis of requirements and serious advice to the customer is offered the best solution, where individual needs can be met through the modularity of the product program.

Our goal is also to offer the best possible after sales service, and a quick and efficient spare parts supply.

USEFUL INFORMATION

Before using the machine for the first time, it's the seller's responsibility that the buyer is given this parts list. If the machine is resold, the parts list must be transferred to the new owner.

Please fill out the list below to ensure that the necessary information is at hand when ordering spare parts etc.

Serial No

Delivery date

Dealer

Tel. / E-mail



Merkurvej 25
DK 6000 Kolding
Denmark
Tel: +45 75553644
E-mail: info@greentec.eu
www: www.greentec.eu
Opening hours: Mon-Fri 8-16

ORDERING PARTS

When ordering parts please refer to your parts list to help your dealer with your order.

- *Part number and quantity*
- *Description*
- *Machine model number*
- *Serial number of the machine*
- *Delivery instructions (e.g. next day).*

Delivery is normally via carrier direct to your dealer. Please check with your dealer for stock availability and arrangement of dispatch. Ensure you or your dealer has sufficient cover for parts requirement outside factory hours.

Important Note:

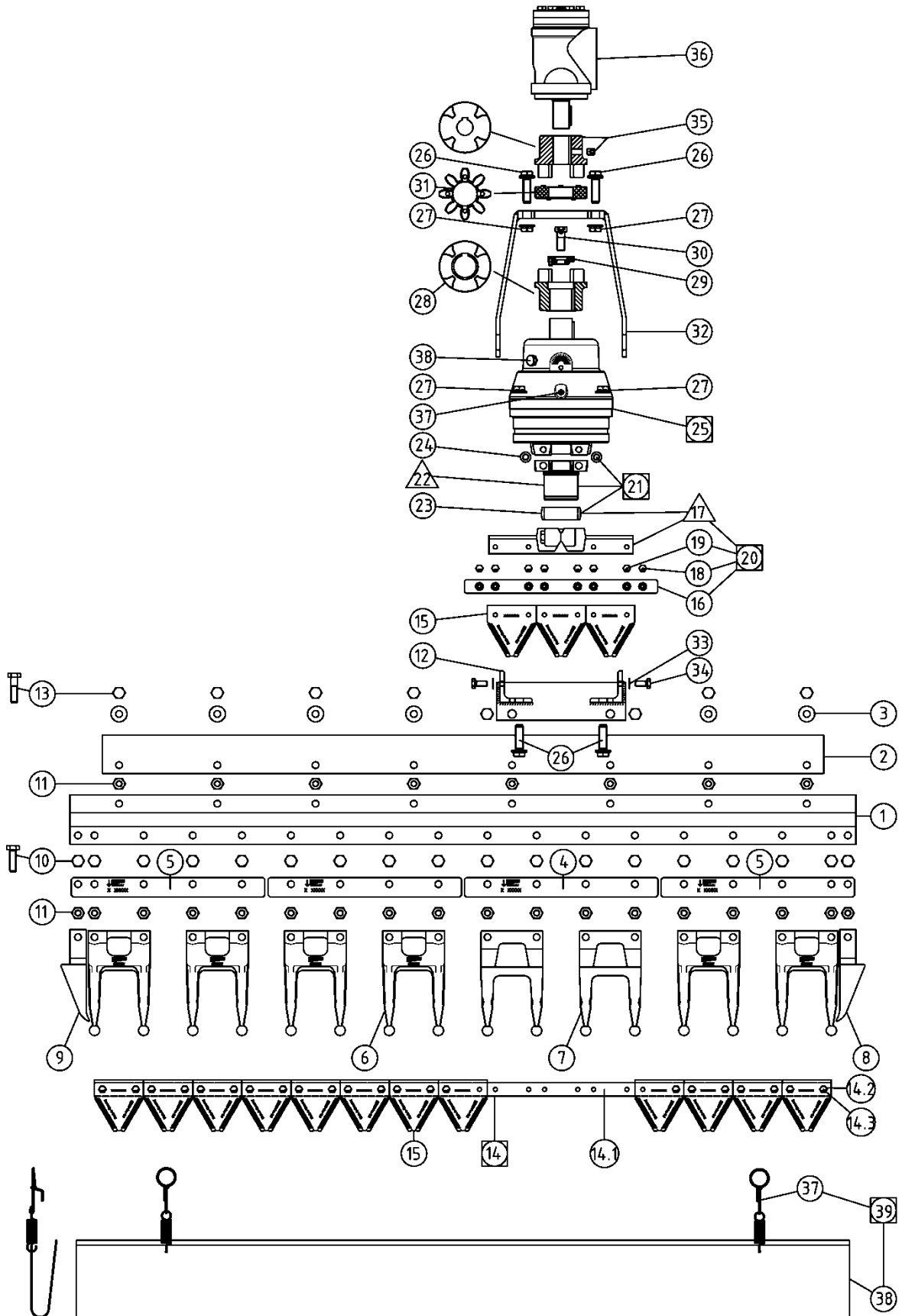
The information contained in this manual is correct at the time of publication. However, in the course of constant development, changes in specification are inevitable. Should you find the information given in this book different to the machine it relates to, please contact the “After Sales Department” for advice.

Key:

LH: Left hand
RH: Right hand

SPARE PARTS

Main frame HL 150-180-210-240



Main frame HL 150

Item nbr	Parts nbr	Description	Qty
1	01828	Profile bar	2
2	01834	Reinforcement strip	1
3	01064	Spacer tube	8
4	10726	Spancebar (1 foot;4-holes)	3
5	01060	Outer spacebar (1 foot;5-holes)	2
6	10631	Guard 17mm with keep-off balls	8
7	14502	Leader-guard 17mm with keep-off ball	2
8	01048	Protection guard right	1
9	01049	Protection guard left	1
10	2770396	Hexagon head screw	22
11	9113005	Nut	32
12	12588	Gearbox console	1
13	8142001	Hexagon head screw	10
14	15077	Knife 5 foot (pos 15/16/18/19)	1
14.1	12087	Knife back (5 foot)	1
14.2	10931	Teeth bolt	30
14.3	13961	Flange nut	30
15	10991	Knife section pro-cut fine	19
16	10926	Knife connector	1
17	X	Knifehead pro-drive	1
18	10067	Hexagon head screw	2
19	01086	Hexagon head screw	6
20	11371	Knifehead pro-drive cpl.	1
21	12766	Head connector 17mm cpl.	1
21	14739	Head connector 17mm cpl. Maintenance	1
22	X	Head connector 17mm (pos 21)	1
23	12543	Adapter POM	1
24	10099	Bolt	2
25	12480	Pro-drive 85Hs G	1
26	01087	Ripp bolt	6
27	6923122	Ripp nut	6
28	14671	Claw coupling	1
29	12601	Tension washer complete	1
30	8222006	Bolt	1
31	12603	Coupling star	1
32	12586	Motorholder	1
33	27770456	Washer	4
34	01089	Hexagon screw	4
35	12610	Claw coupling	1
36	12442	Hydromotor EPM/50ccm	1
36	12443	Hydromotor EPM/80ccm	1
36	12444	Hydromotor EPM/100ccm	1
37	01923	Knife protector retention clip	2
38	01925	Knife protector 6 foot	1
39	01930	Knife protector 6 foot cpl.	1

Main frame HL 180

Item nbr	Parts nbr	Description	Qty
1	01829	Profile bar	2
2	01835	Reinforcement strip	1
3	01064	Spacer tube	10
4	10726	Spancebar (1 foot;4-holes)	4
5	01060	Outer spacebar (1 foot;5-holes)	2
6	10631	Guard 17mm with keep-off balls	10
7	14502	Leader-guard 17mm with keep-off ball	2
8	01048	Protection guard right	1
9	01049	Protection guard left	1
10	2770396	Hexagon head screw	26
11	9113005	Nut	38
12	12588	Gearbox console	1
13	8142001	Hexagon head screw	12
14	15078	Knife 6 foot (pos 15/16/18/19)	1
14.1	12088	Knife back (6 foot)	1
14.2	10931	Teeth bolt	38
14.3	13961	Flange nut	38
15	10991	Knife section pro-cut fine	23
16	10926	Knife connector	1
17	X	Knifehead pro-drive	1
18	10067	Hexagon head screw	2
19	01086	Hexagon head screw	6
20	11371	Knifehead pro-drive cpl.	1
21	12766	Head connector 17mm cpl.	1
21	14739	Head connector 17mm cpl. Maintenance	1
22	X	Head connector 17mm (pos 21)	1
23	12543	Adapter POM	1
24	10099	Bolt	2
25	12480	Pro-drive 85Hs G	1
26	01087	Ripp bolt	6
27	6923122	Ripp nut	6
28	14671	Claw coupling	1
29	12601	Tension washer complete	1
30	8222006	Bolt	1
31	12603	Coupling star	1
32	12586	Motorholder	1
33	2770456	Washer	4
34	01089	Hexagon screw	4
35	12610	Claw coupling	1
36	12442	Hydromotor EPM/50ccm	1
36	12443	Hydromotor EPM/80ccm	1
36	12444	Hydromotor EPM/100ccm	1
37	01923	Knife protector retention clip	2
38	01926	Knife protector 6 foot	1
39	01931	Knife protector 6 foot cpl.	1

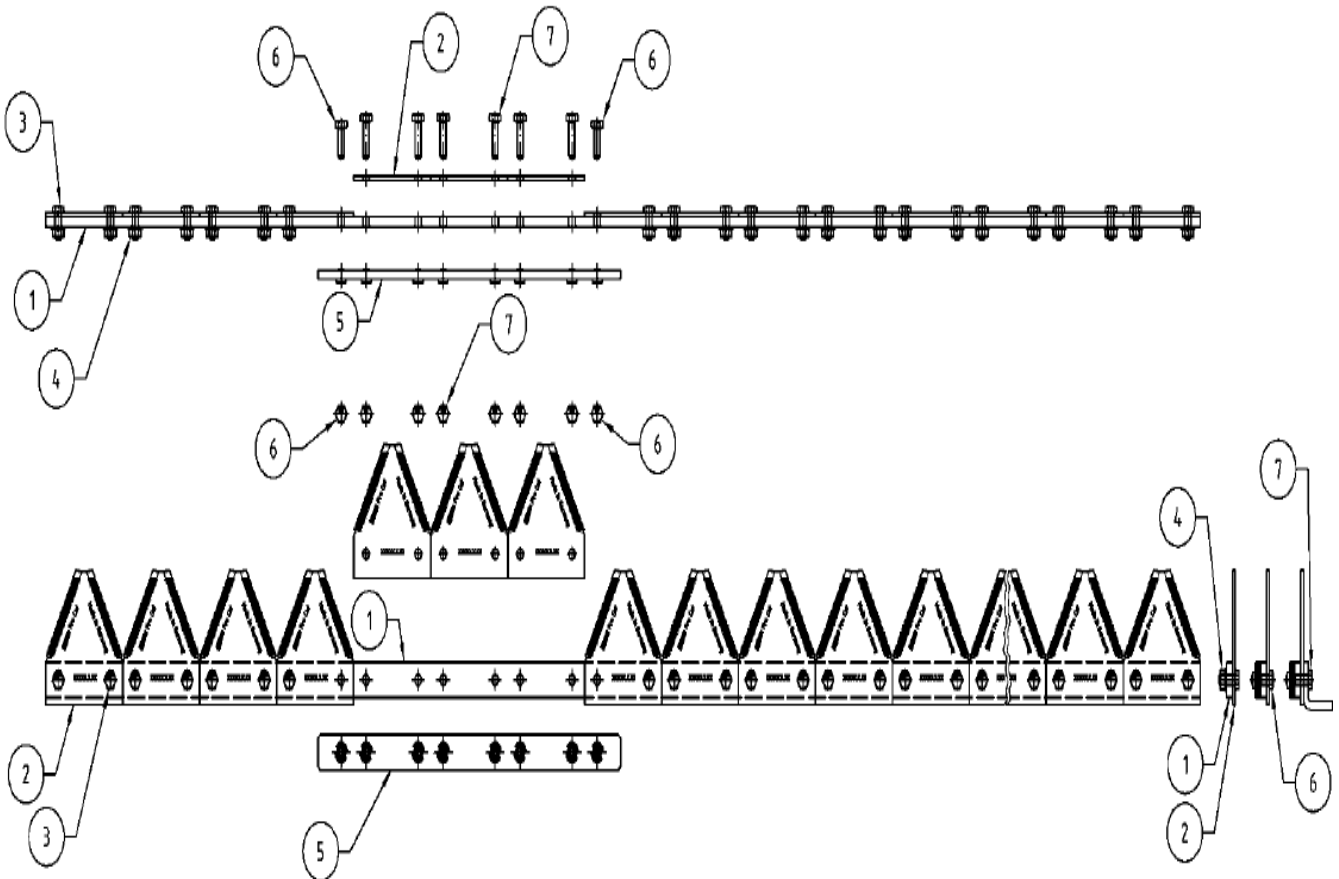
Main frame HL 210

Item nbr.	Parts nbr	Description	Qty
1	01830	Profile bar	2
2	01836	Reinforcement strip	1
3	01064	Spacer tube	12
4	10726	Sparcebar (1 foot;4-holes)	5
5	01060	Outer spacebar (1 foot;5-holes)	2
6	10631	Guard 17mm with keep-off balls	12
7	14502	Leader-guard 17mm with keep-off ball	2
8	01048	Protection guard right	1
9	01049	Protection guard left	1
10	2770396	Hexagon head screw	30
11	9113005	Nut	44
12	12588	Gearbox console	1
13	8142001	Hexagon head screw	14
14	15079	Knife 7 foot (pos 15/16/18/19)	1
14.1	12089	Knife back (foot)	1
14.2	10931	Teeth bolt	46
14.3	13961	Flange nut	46
15	10991	Knife section pro-cut fine	27
16	10926	Knife connector	1
17	X	Knifehead pro-drive	1
18	10067	Hexagon head screw	2
19	01086	Hexagon head screw	6
20	11371	Knifehead pro-drive cpl.	1
21	12766	Head connector 17mm cpl.	1
21	14739	Head connector 17mm cpl. Maintenance	1
22	X	Head connector 17mm (pos 21)	1
23	12543	Adapter POM	1
24	10099	Bolt	2
25	12480	Pro-drive 85Hs G	1
26	01087	Ripp bolt	6
27	6923122	Ripp nut	6
28	14671	Claw coupling	1
29	12601	Tension washer complete	1
30	8222006	Bolt	1
31	12603	Coupling star	1
32	12586	Motorholder	1
33	2770456	Washer	4
34	01089	Hexagon screw	4
35	12610	Claw coupling	1
36	12442	Hydromotor EPM/50ccm	1
36	12443	Hydromotor EPM/80ccm	1
36	12444	Hydromotor EPM/100ccm	1
37	01923	Knife protector retention clip	2
38	01927	Knife protector 7 foot	1
39	01932	Knife protector 7 foot cpl.	1

Main frame HL 240

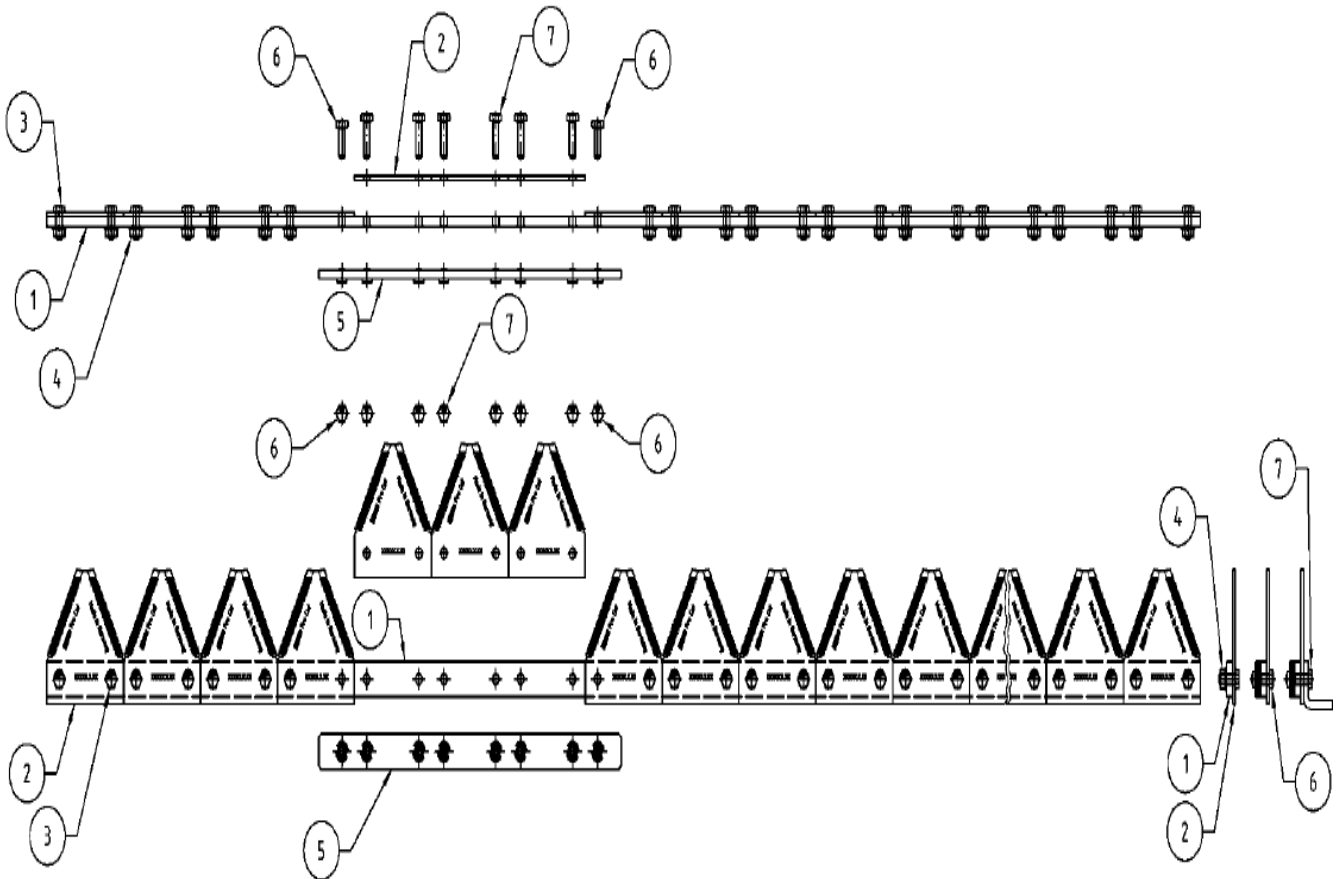
Item nbr.	Parts nbr	Description	Qty
1	02451	Profile bar	2
2	02449	Reinforcement strip	1
3	01064	Spacer tube	14
4	10726.02	Sparcebar (1 foot;4-holes)	8
5			
6	10631	Guard 17mm with keep-off balls	12
7	14502	Leader-guard 17mm with keep-off ball	2
8	01049.01	Protection guard right	1
9	01048.01	Protection guard left	1
10	2770396	Hexagon head screw	2
10	10076	Hexagon head screw	32
11	9113005	Nut	50
12	12588.02	Gearbox console	1
13	13391	Hexagon head screw M10x45	16
14	15079	Knife 8 foot (pos 15/16/18/19)	1
14.1	12089	Knife back (foot)	1
14.2	10931	Teeth bolt	60
14.3	13961	Flange nut	60
15	10991	Knife section pro-cut fine	30
16	10926	Knife connector	1
17	X	Knifehead pro-drive	1
18	10067.02	Hexagon head screw	2
19	01086.01	Hexagon head screw	6
20	11371	Knifehead pro-drive cpl.	1
21	12766	Head connector 17mm cpl.	1
21	14739	Head connector 17mm cpl. Maintenance	1
22	X	Head connector 17mm (pos 21)	1
23	12543	Adapter POM	1
24	10099	Bolt	2
25	02962	Pro-drive 85Hs G	1
26	01087	Ripp bolt	6
27	3923122	Ripp nut	6
28	14671	Claw coupling	1
29	12601	Tension washer complete	1
30	8222006	Bolt	1
31	12603	Coupling star	1
32	12586.01	Motorholder	1
33	2770456	Washer	4
34	01089	Hexagon screw	4
35	12610	Claw coupling	1
36	12442	Hydromotor EPM/50ccm	1
36	12443	Hydromotor EPM/80ccm	1
36	12444	Hydromotor EPM/100ccm	1
37	01923	Knife protector retention clip	2
38	02569	Knife protector 8 foot	1
39		Knife protector 8 foot cpl.	1

Knife HL 150



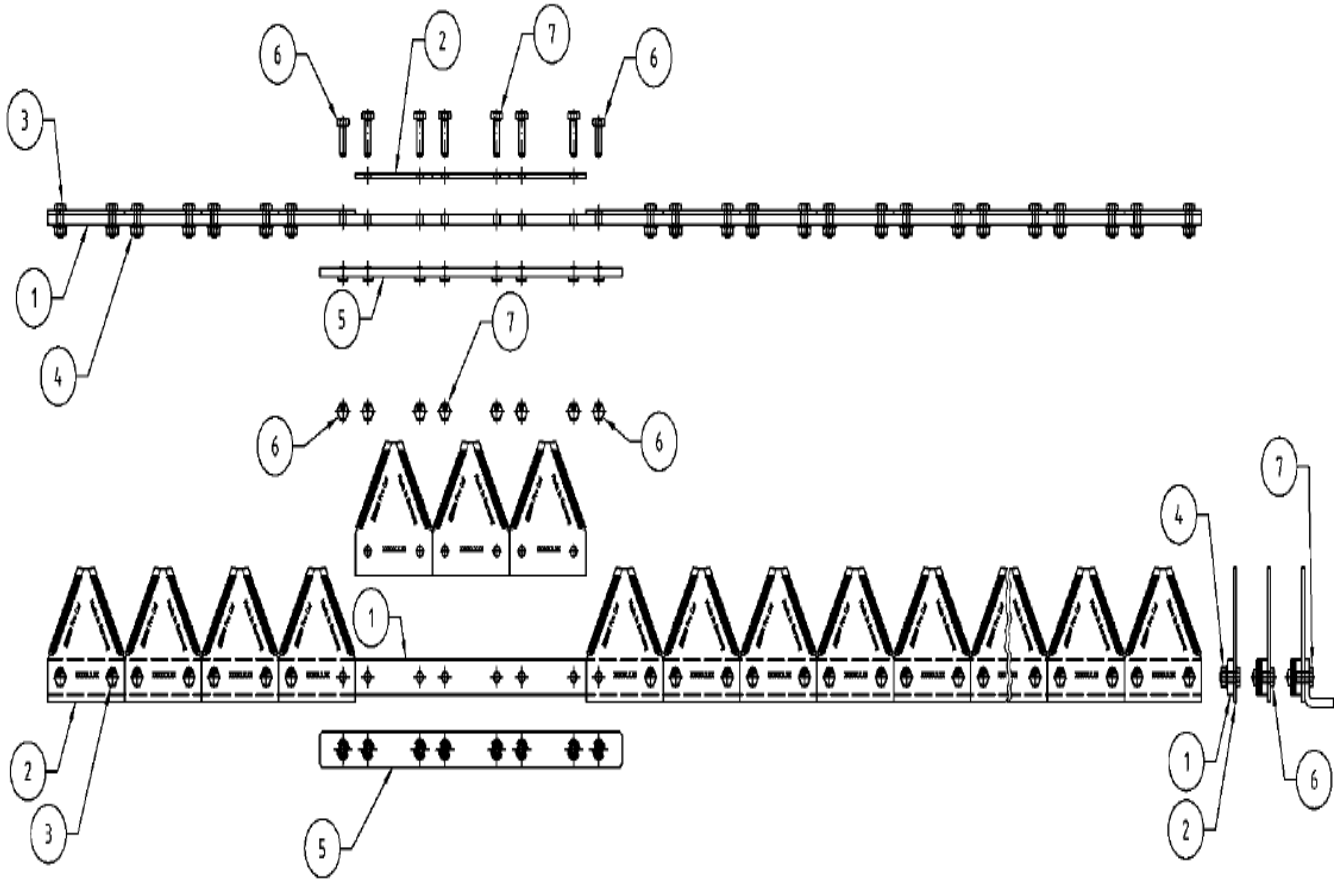
Item nbr	Part nbr.	Description	QTY
1	12087	Knife back 5 foot	1
2	10991	Knife section pro cut fine CC	18
3	10931	Teeth bolt	30
4	13961	Hexagon flange nut	30
5	10926	Knife connector	1
6	10067	Hexagon head screw	2
7	01086	Hexagon head screw	6

Knife HL 180



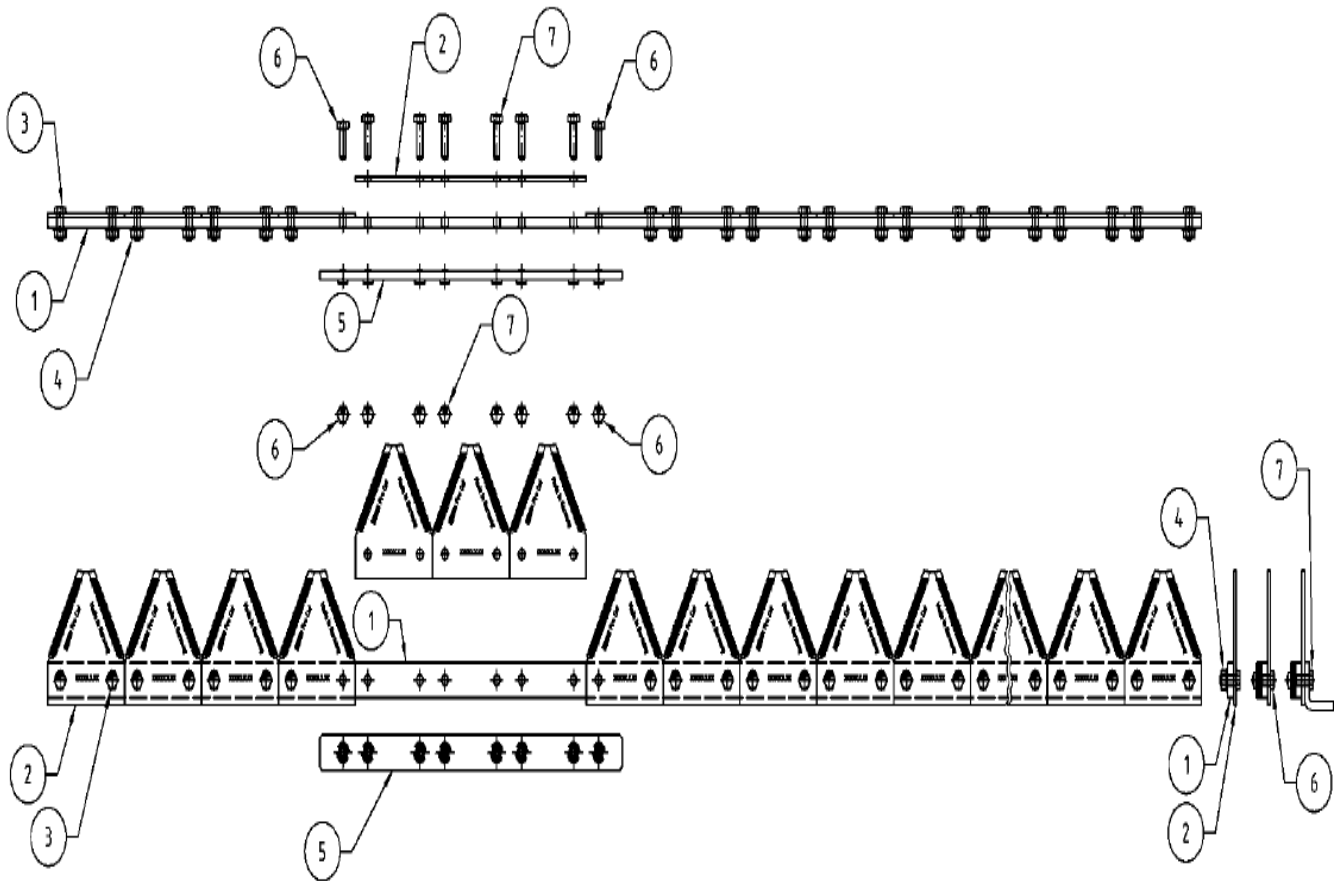
Item nbr	Part nbr.	Description	QTY
1	12088	Knife back 6 foot	1
2	10991	Knife section pro cut fine CC	22
3	10931	Teeth bolt	38
4	13961	Hexagon flange nut	38
5	10926	Knife connector	1
6	10067	Hexagon head screw	2
7	01086	Hexagon head screw	6

Knife HL 210



Item nbr	Part nbr.	Description	QTY
1	15079	Knife back 7 foot	1
2	10991	Knife section pro cut fine CC	26
3	10931	Teeth bolt	46
4	13961	Hexagon flange nut	46
5	10926	Knife connector	1
6	10067	Hexagon head screw	2
7	01086	Hexagon head screw	6

Knife HL 240



Item nbr	Part nbr.	Description	QTY
1		Knife back 8 foot	1
2	10991	Knife section pro cut fine CC	30
3	10931	Teeth bolt	54
4	13961	Hexagon flange nut	54
5	10926	Knife connector	1
6	10067	Hexagon head screw	2
7	01086	Hexagon head screw	6

Stickers HL 150-180-210-240

HL 150



HL150_Adv mærker - 167 x 80 mm



HL150 adv info - 54 x 54 mm



8770322 Smørring - 50 x 24 mm

HØJRE



HL logo - H 217 x 122 mm

VENSTRE



HL logo - V 217 x 122 mm



HL150 adv2 - 80 x 42 mm



GreenTec_Påbudsmærker - 130 x 25 mm



HL 150 - H 217 x 122 mm



HL 150 - V 217 x 122 mm



Made in denmark - 50 x 16 mm

HL150 KITS

HL 180



HL180_Adv mærker - 167 x 80 mm



HL180 adv info - 54 x 54 mm



8770322 Smørring - 50 x 24 mm

HØJRE



HL logo - H 217 x 122 mm

VENSTRE



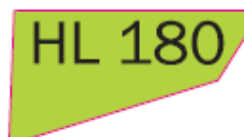
HL logo - V 217 x 122 mm



HL180 adv2 - 80 x 42 mm



GreenTec_Påbudsmærker - 130 x 25 mm



HL 180 - H 217 x 122 mm



HL 180 - V 217 x 122 mm



Made in denmark - 50 x 16 mm

HL180 KITS

HL 210



HL210_Adv mærker – 167 x 80 mm



HL210 adv info – 54 x 54 mm



8770322 Smærring – 50 x 24 mm

HØJRE



HL logo - H 217 x 122 mm

VENSTRE



HL logo - V 217 x 122 mm



HL210 adv2 – 80 x 42 mm



GreenTec_Råbudsmærker – 130 x 25 mm



HL 210 – H 217 x 122 mm



HL 210 – V 217 x 122 mm



Made in denmark – 50 x 16 mm

HL210 KITS

HL 240



HL240_Adv mærker – 167 x 80 mm



HL240 adv info – 54 x 54 mm



8770322 Smærring – 50 x 24 mm

HØJRE



HL logo - H 217 x 122 mm

VENSTRE



HL logo - V 217 x 122 mm



HL240 adv2 – 80 x 42 mm



GreenTec_Råbudsmærker – 130 x 25 mm



HL 240 – H 217 x 122 mm



HL 240 – V 217 x 122 mm



Made in denmark – 50 x 16 mm

HL240 KITS

Part number	Description	QTY
HL150KITS	Stickers kit cpl.	1
HL180KITS	Stickers kit cpl.	1
HL210KITS	Stickers kit cpl.	1
HL240KITS	Stickers kit cpl.	1



Merkurvej 25 | DK-6000 Kolding | Tel.: +45 75 55 36 44 | info@GreenTec.eu | www.GreenTec.eu

Cutting Edge Technology